

# ***Initial Results of Error-Based Mesh Adaptation in M3D-C1***

---

**Usman Riaz, Seegyoung Seol, Mark Shephard**

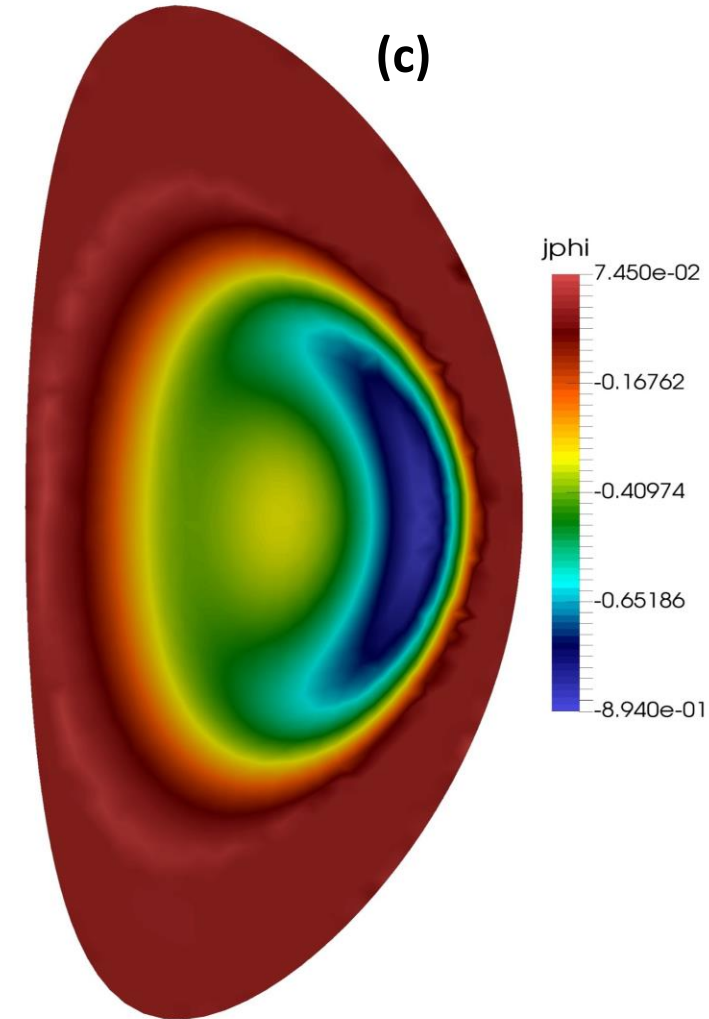
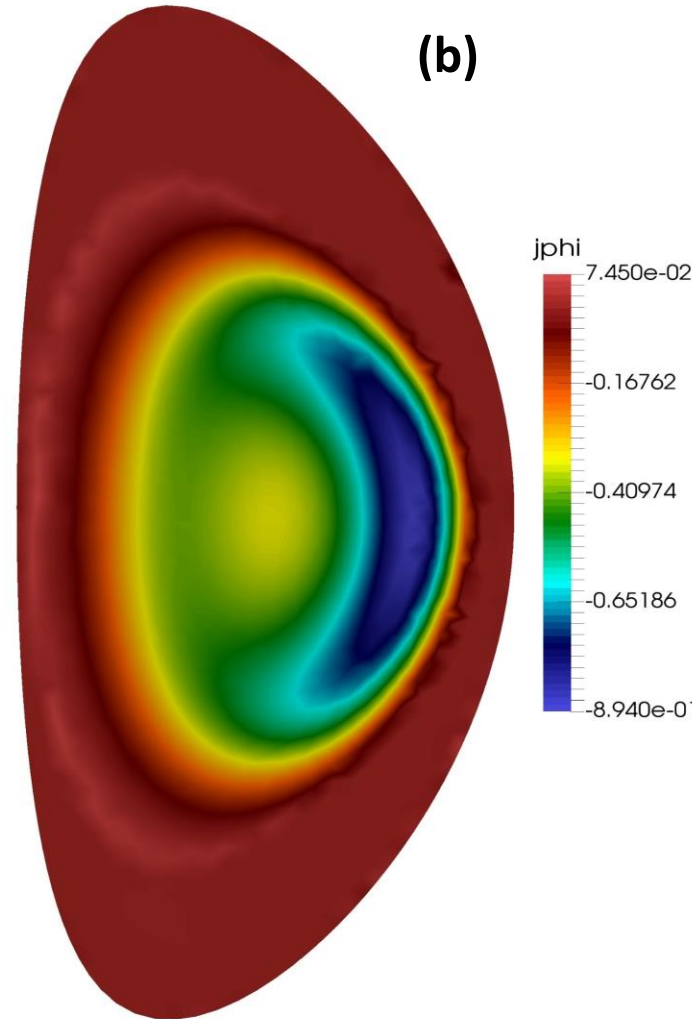
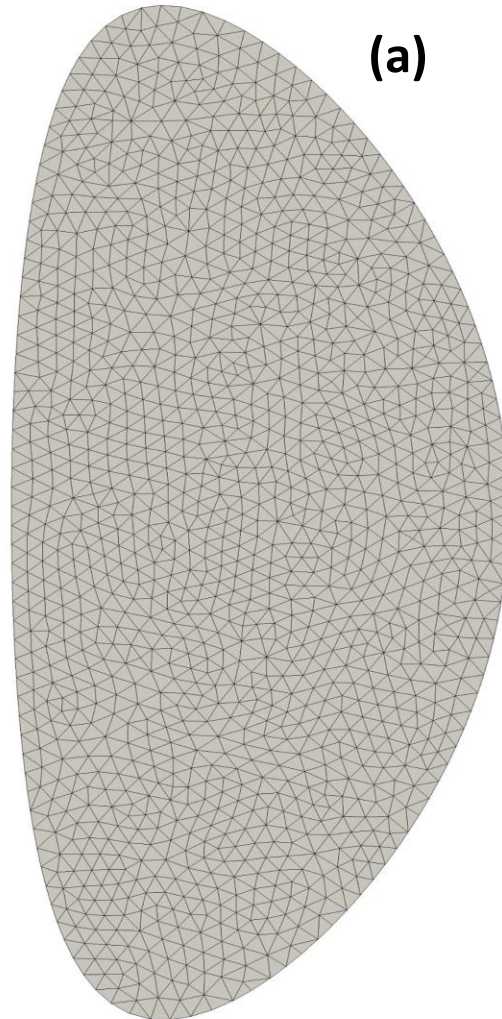
**Scientific Computation Research Center  
Rensselaer Polytechnic Institute**



# Timestep = 10

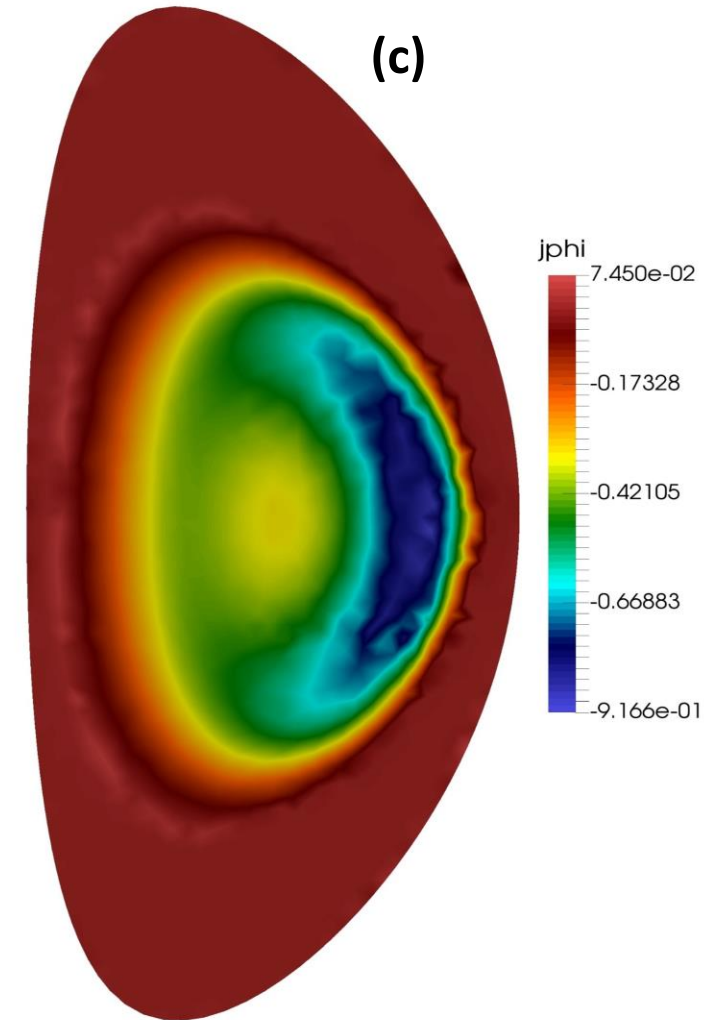
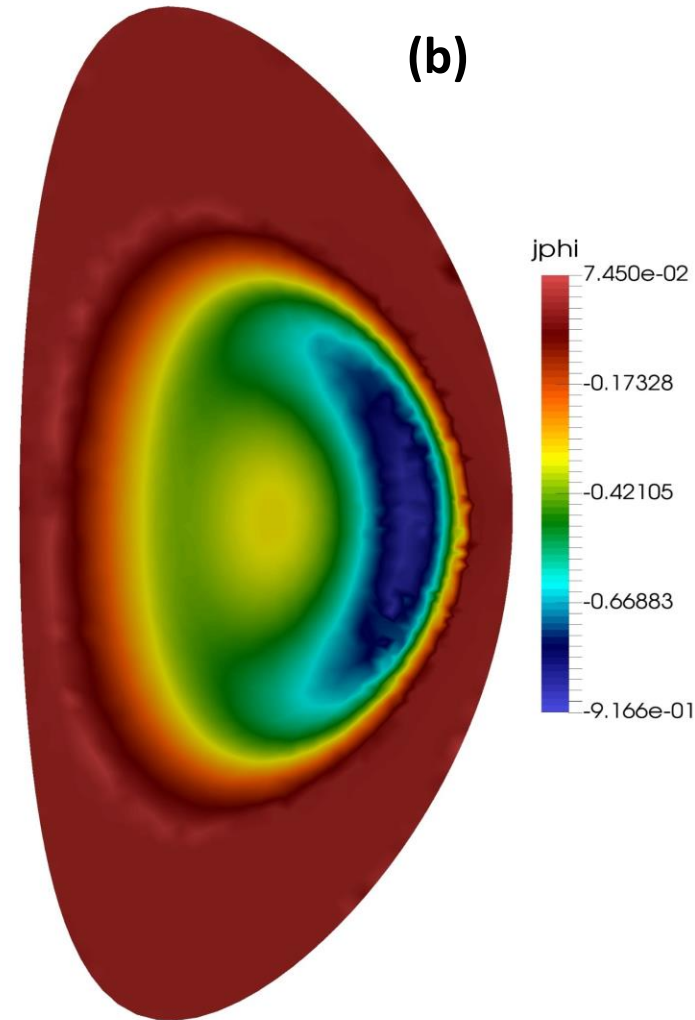
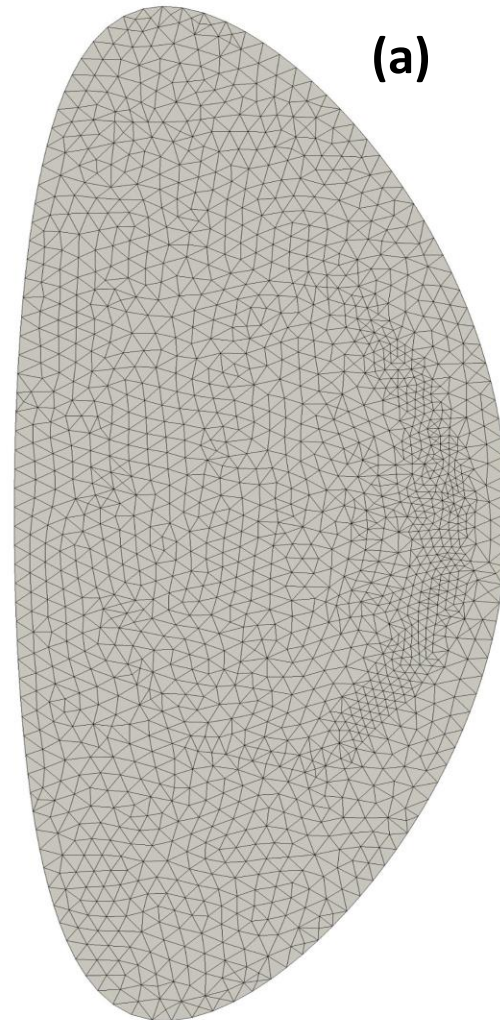
	adapted mesh	Initial mesh
mesh vertices	n/a	1323
mesh edges	n/a	3841
mesh faces	n/a	2519

- Mesh Parts: 4
- Time steps per adapt: 10
- $\nabla(\psi_R)$
- (a): adapted mesh
- (b): solution on adapted mesh
- (c): solution on initial mesh



# Timestep = 100

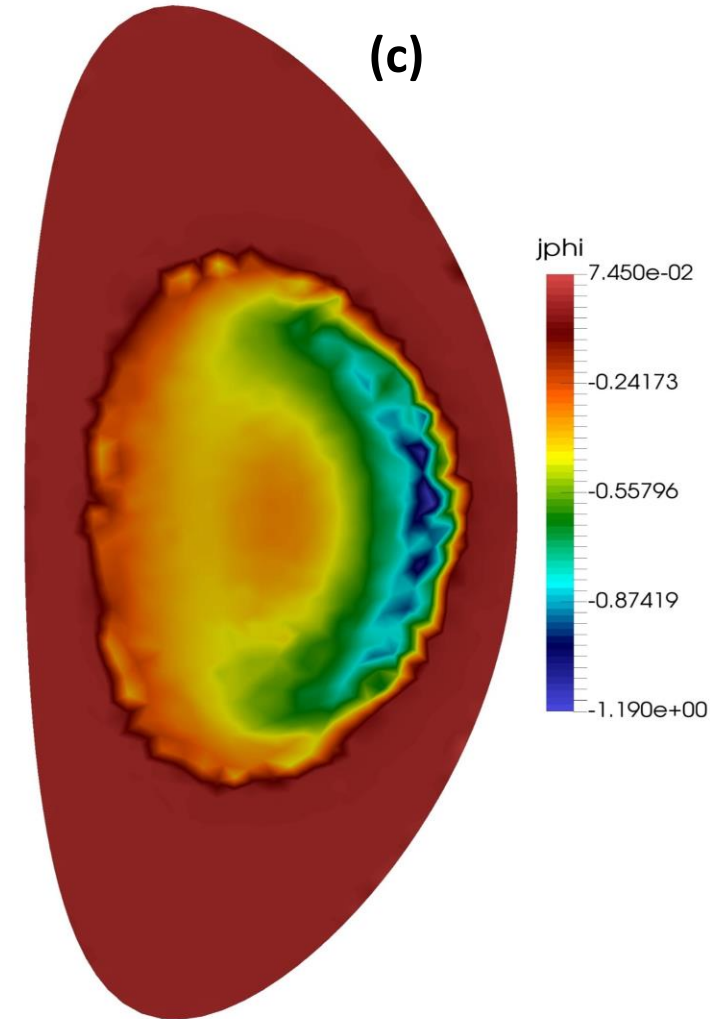
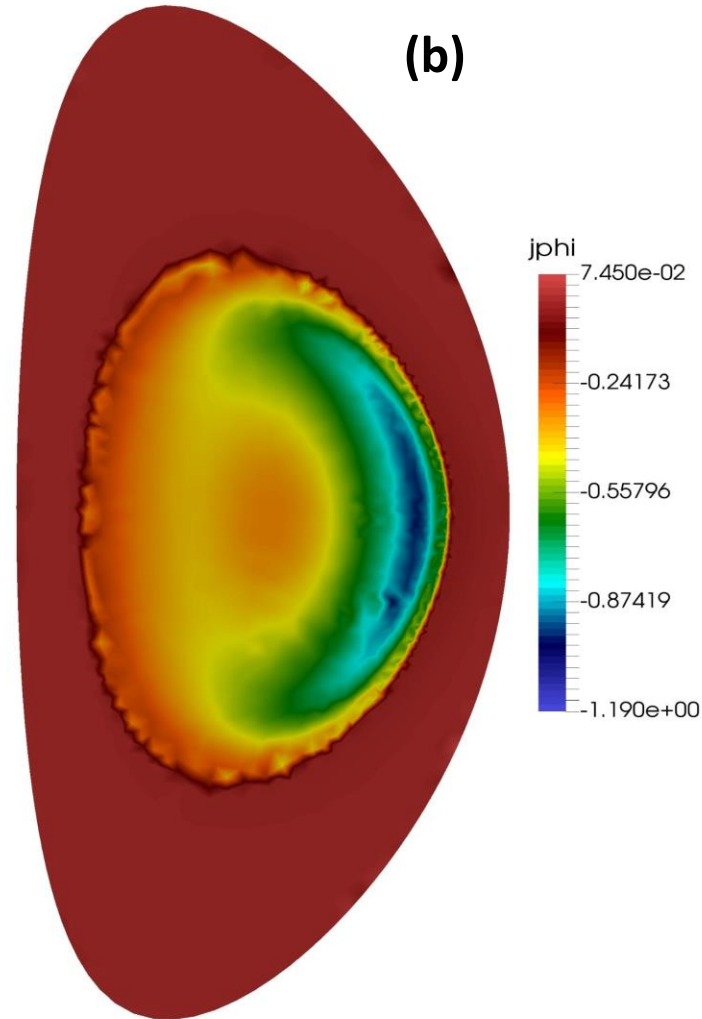
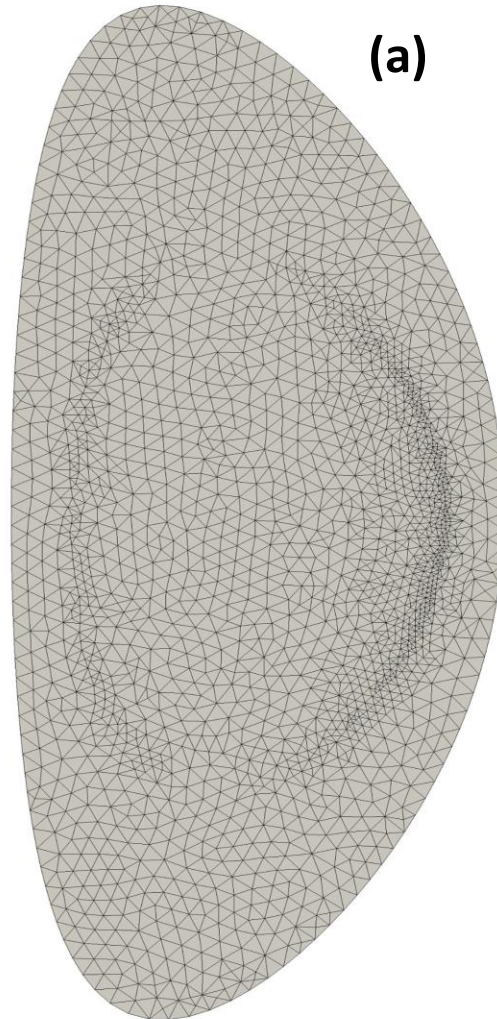
	adapted mesh	Initial mesh
mesh vertices	1718	1323
mesh edges	5026	3841
mesh faces	3309	2519





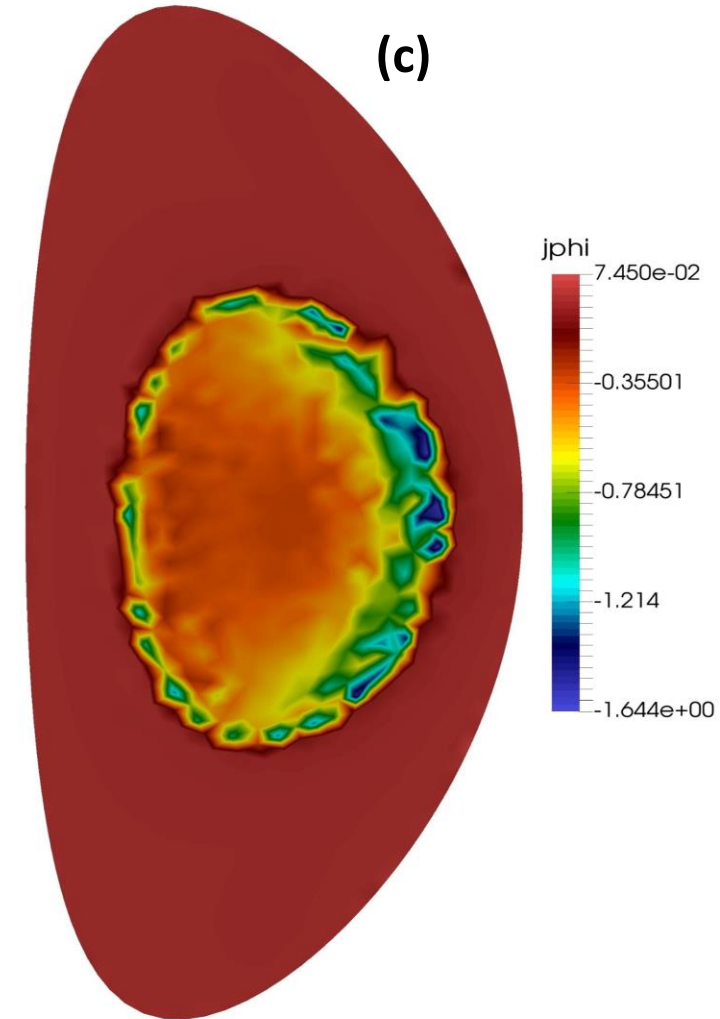
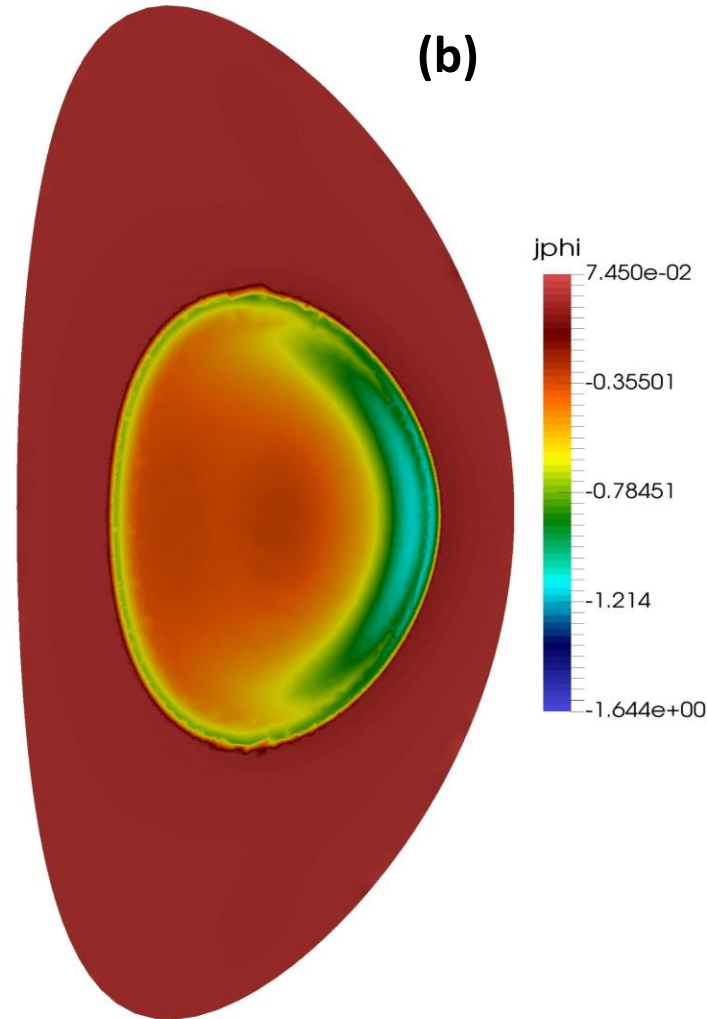
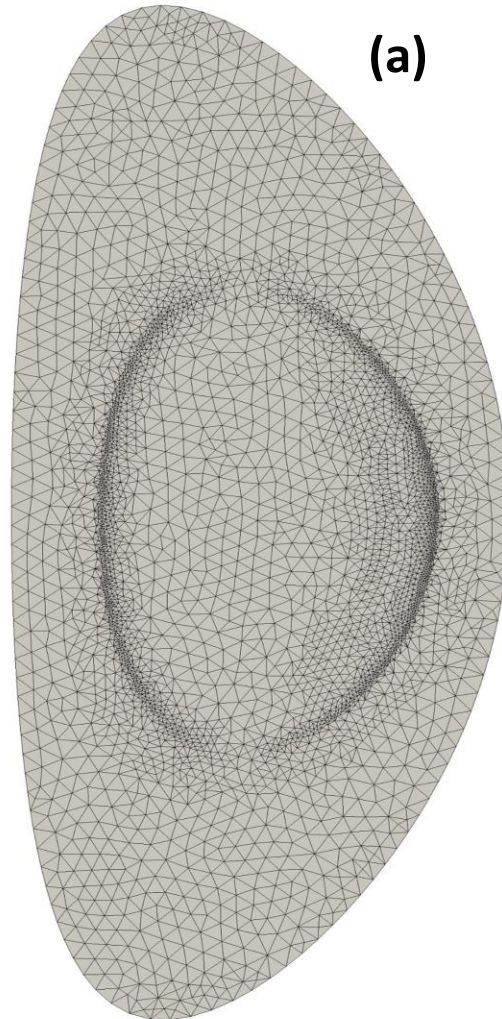
# Timestep = 200

	adapted mesh	Initial mesh
mesh vertices	2172	1323
mesh edges	6388	3841
mesh faces	4217	2519



# Timestep = 300

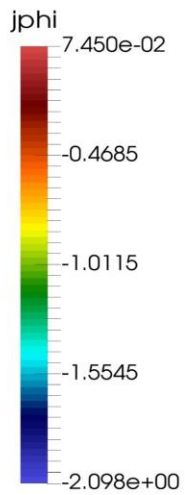
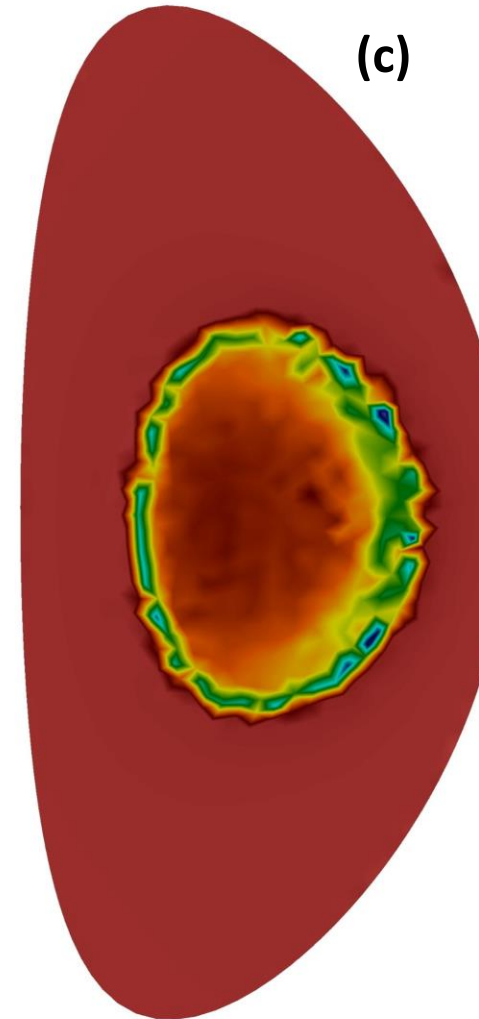
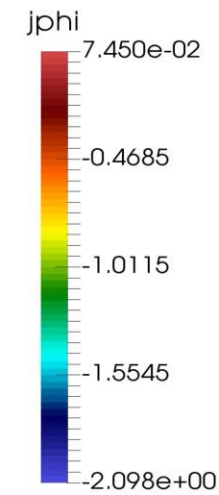
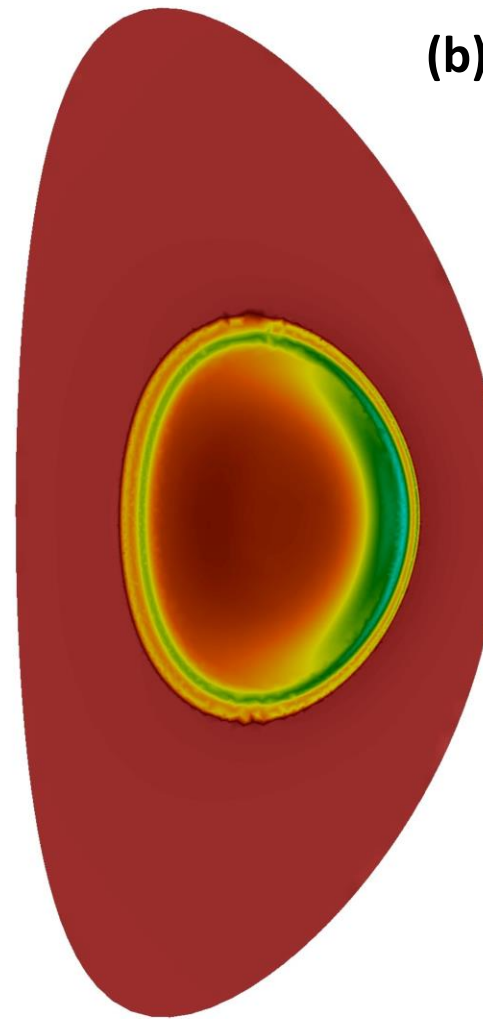
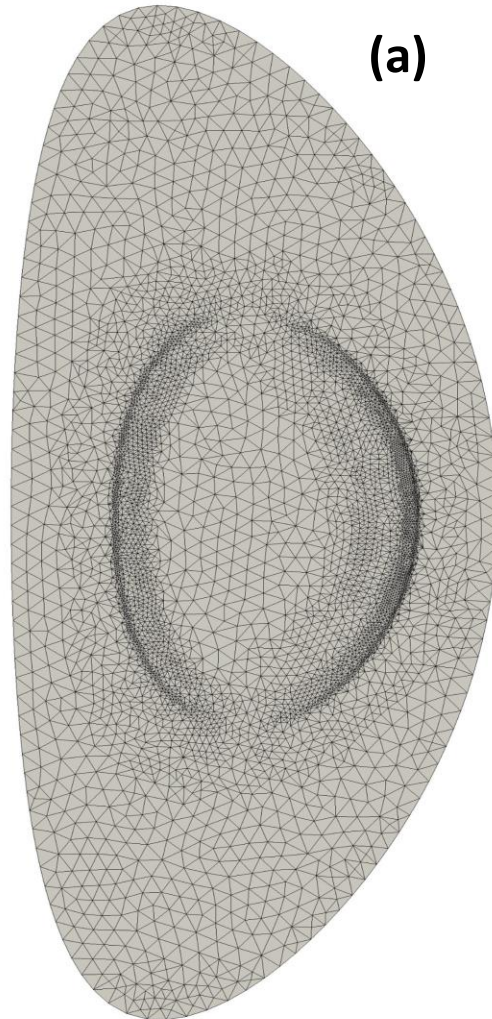
	adapted mesh	Initial mesh
mesh vertices	3976	1323
mesh edges	11800	3841
mesh faces	7825	2519





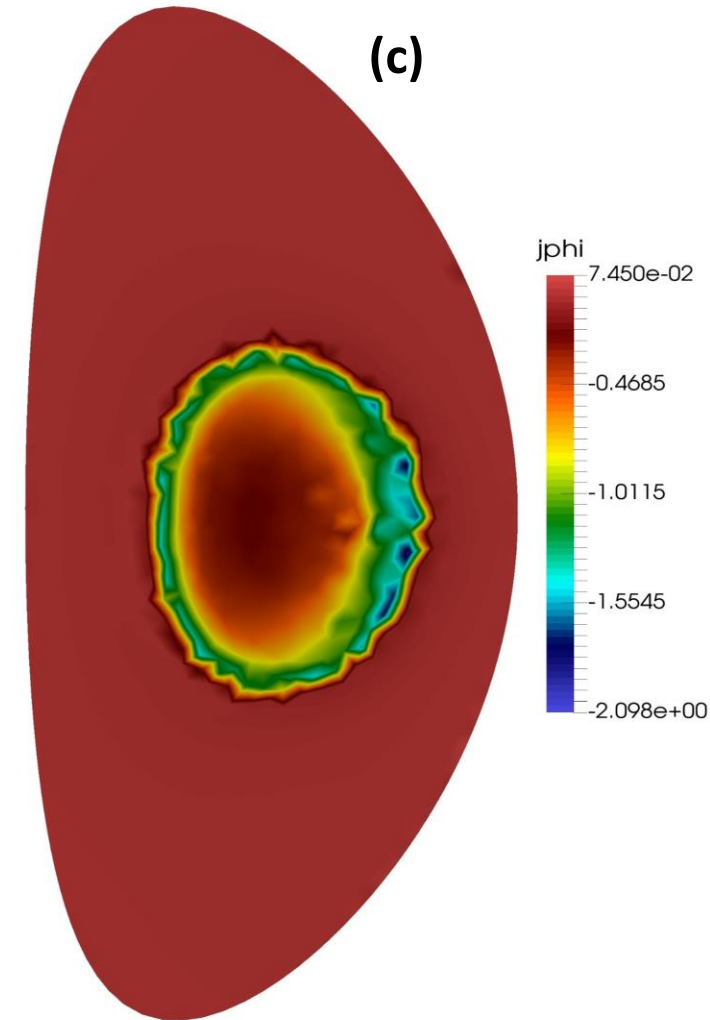
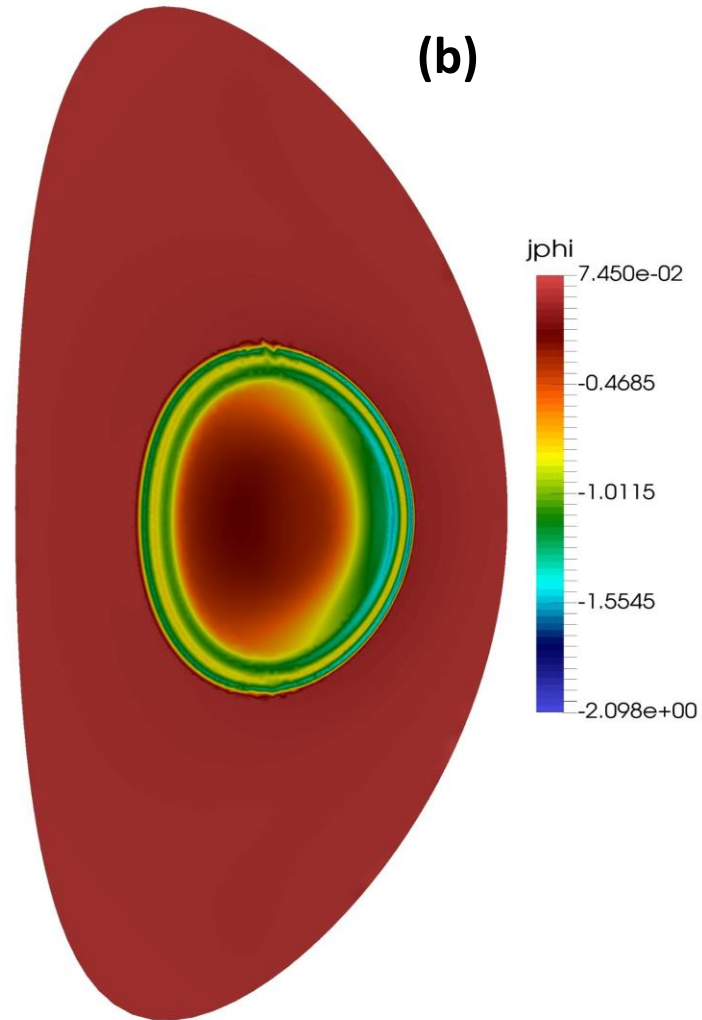
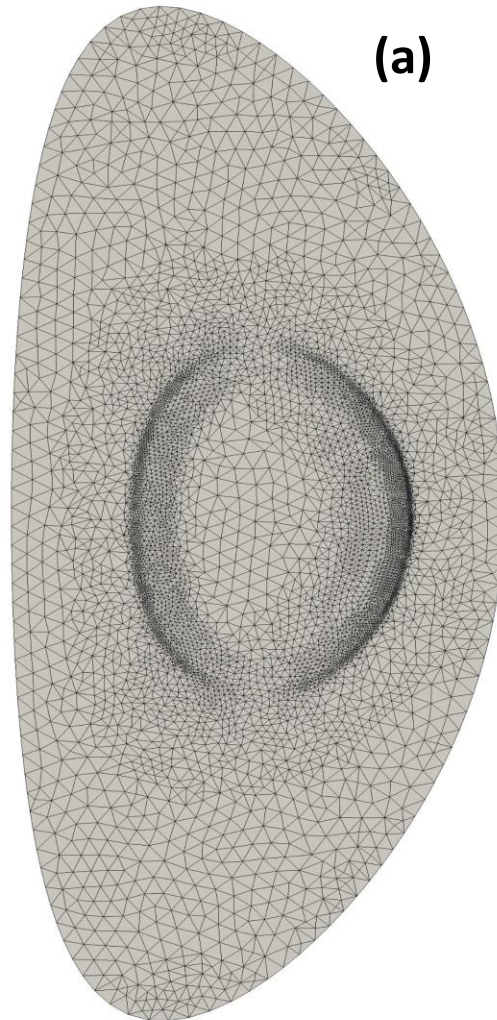
# Timestep = 400

	adapted mesh	Initial mesh
mesh vertices	5629	1323
mesh edges	16759	3841
mesh faces	11131	2519



# Timestep = 500

	adapted mesh	Initial mesh
mesh vertices	6713	1323
mesh edges	20011	3841
mesh faces	13299	2519





# Timestep = 600

	adapted mesh	Initial mesh
mesh vertices	28053	1323
mesh edges	84031	3841
mesh faces	55979	2519

