

M3D-C1 EPI modelling

NSTX-U #203679@705ms

C. F. Clauser

Two TRANSP RUNS

=====

NSTU16 203679A01 20171107 KAYE 0.07-0.72 sec

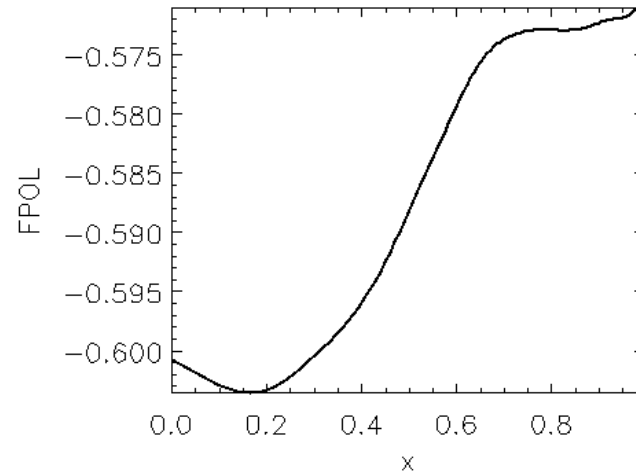
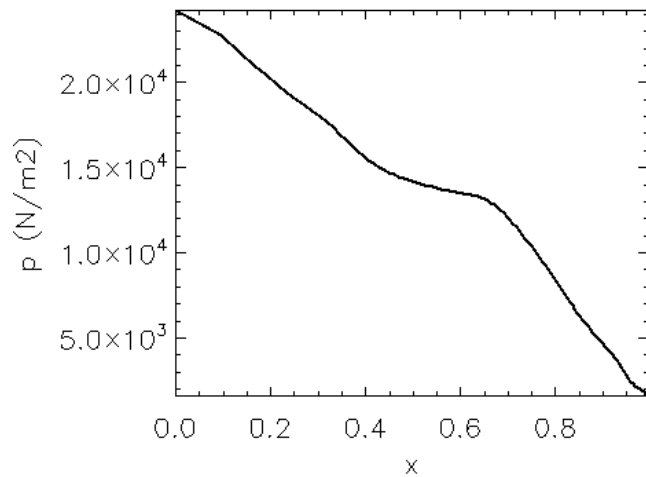
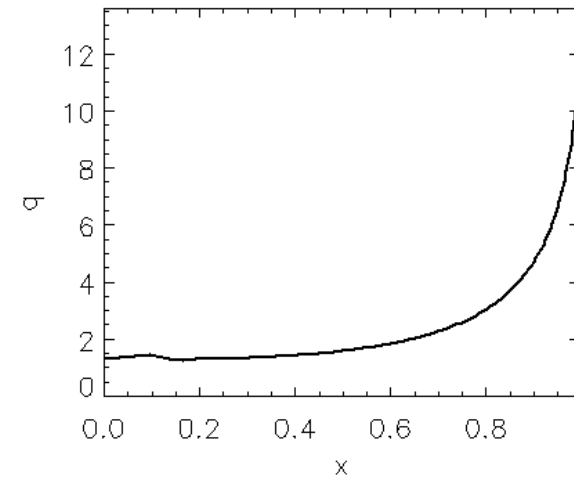
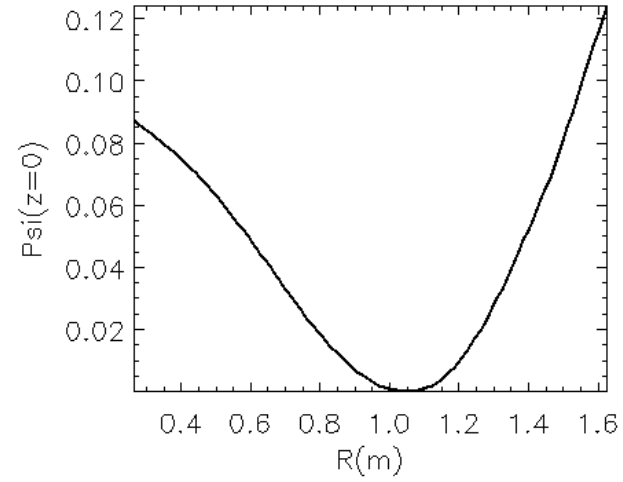
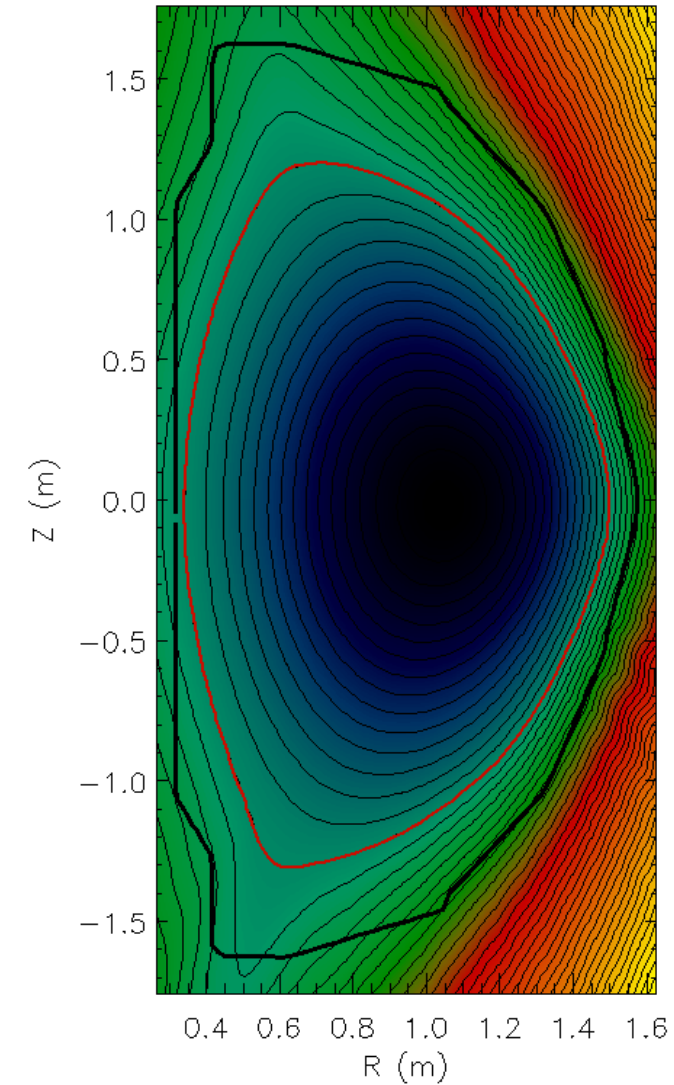
.....
Ti=1.1*Te, neutron feedback, Zeff=2.5 (flat), DN0OUT=1.e13

NSTU16 203679A02 20171107 KAYE 0.07-0.72 sec

.....
Rerun of A01 with RFS and ZFS UFILES pointing to EFIT01.

=====

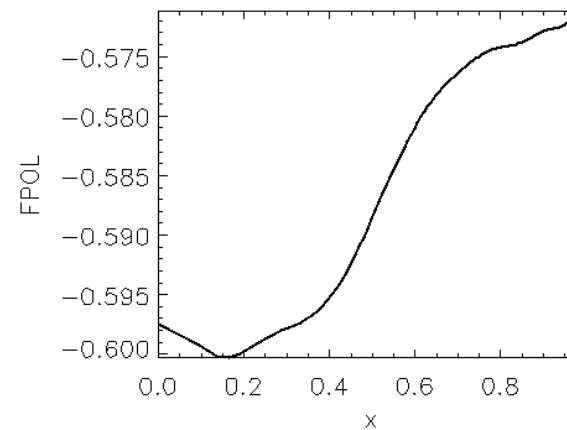
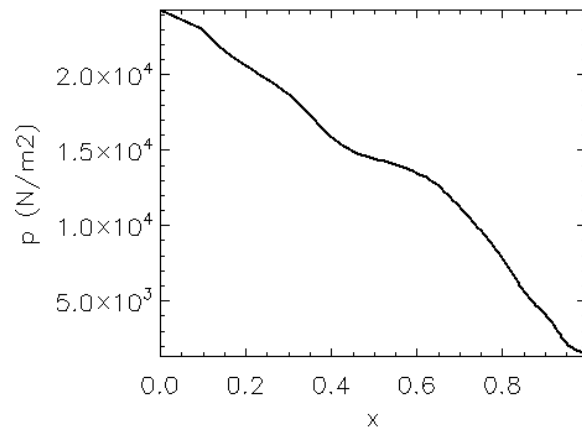
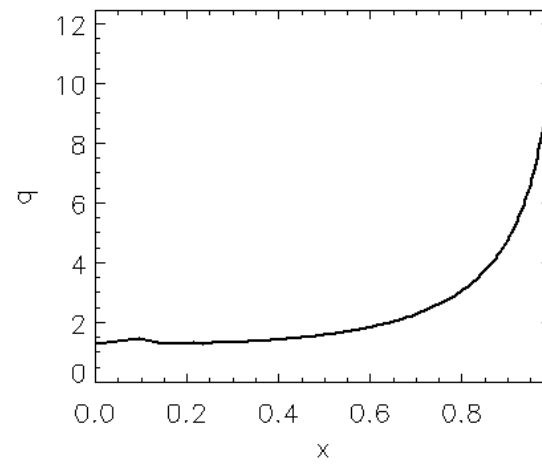
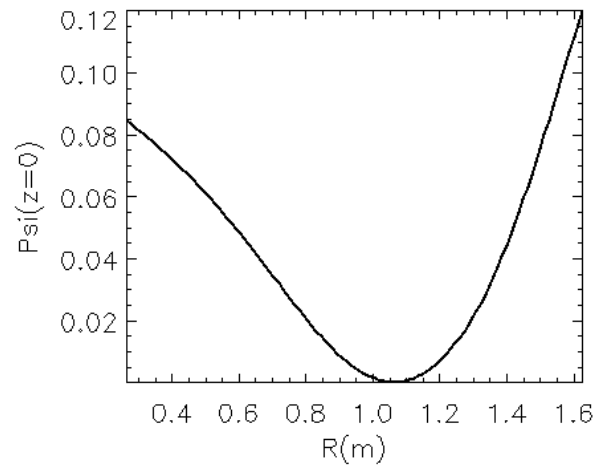
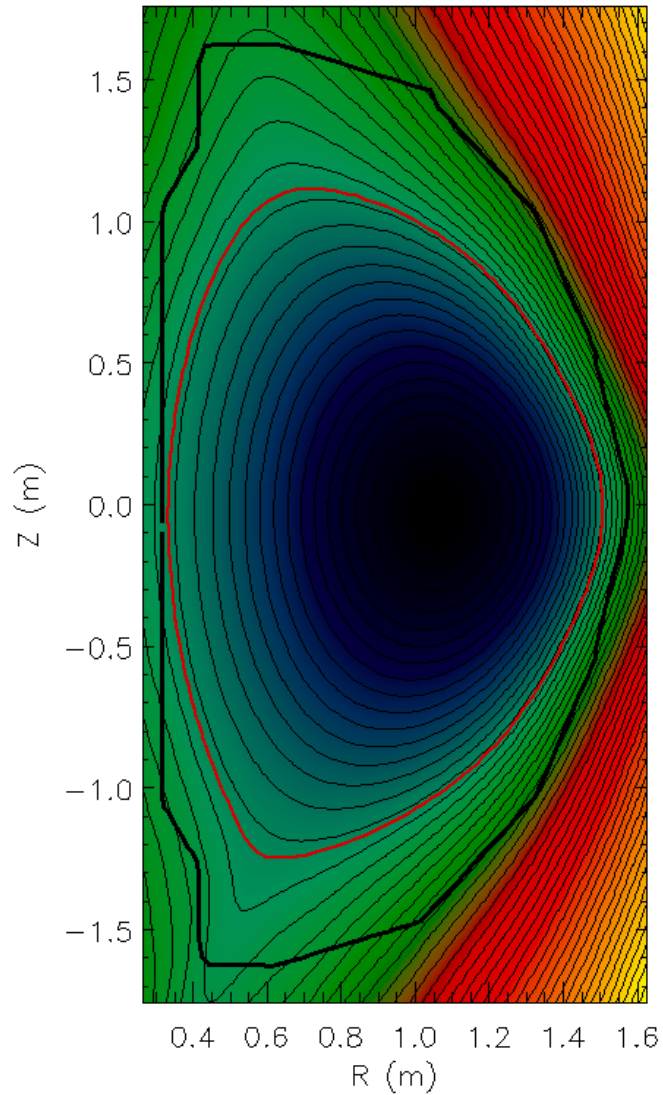
203679A01 – Geqdsk quick look



Note
 $x = \sqrt{\psi_n}$

B_0	-0.62 T
I_p	795 kA

203679A02 – Geqdsk quick look



B_0	-0.62 T
I_p	795 kA

Comparison of both runs

